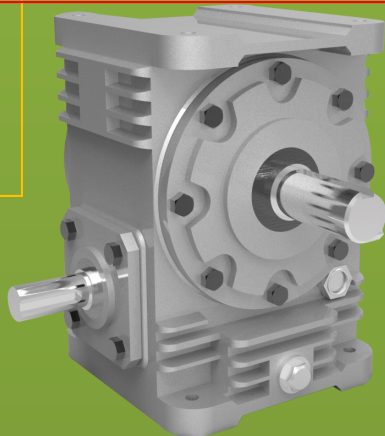
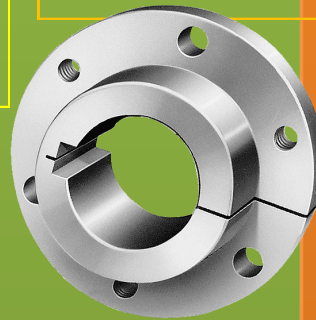
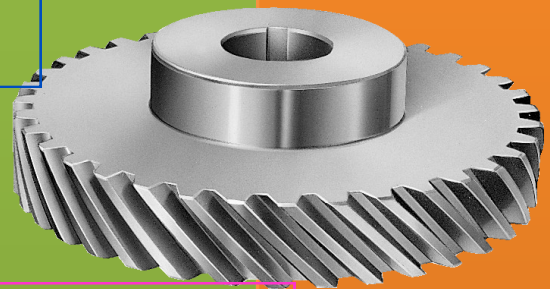
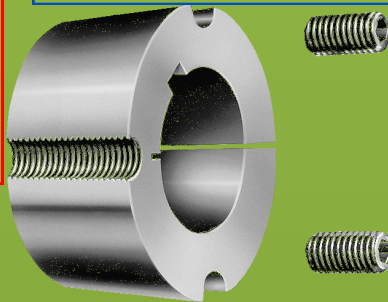
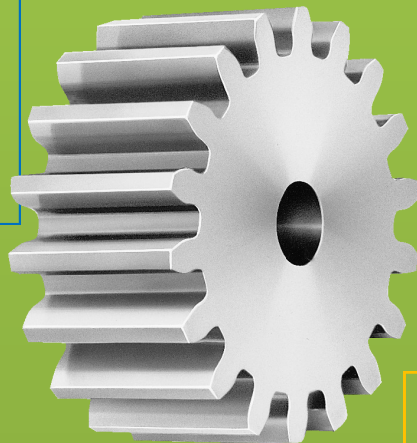
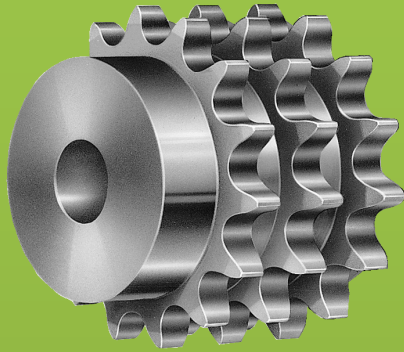


## Timing Pulley Catalogue





*Delivering Quality Since 1997*

## COMPANY PROFILE

Muratech Engineering Company is Leading manufacturing company of Mechanical Power Transmission Products under brand name of 'MURACO POWER'. The company was established in 1997.

We are pleased to introduce ourselves as one of the leading Engineering Company engaged in Manufacturing and Marketing of Mechanical Power Transmission Products i.e. Timing Belt Pulleys, Poly " V " Pulleys, Precision "V " Pulleys (Fenner Type), Precision Gears & Gear Boxes, Universal Joints, Couplings & Sprockets and catering to various leading O.E.M. in India as well as export markets

**Timing Belt Pulley :** As per ISO, DIN and BSW standards in different pitch configurations like MXL (0.080"), XL (0.200"), L (0.375"), H (0.500"), XH (0.875"), XXH (1.1/4"), T - 2.5, T - 5, T - 10, T -20, AT - 5, AT - 10, AT - 20, 3M HTD, 5M HTD, 14M HTD, 20M HTD, S-3M, S-4M, S-5M, S-8M, S-14M mm pitches etc.

**Poly " V " Belt Pulley :** As per ISO-9982 & DIN-7867 standard in different pitch configurations like PH-1.60 MM, PJ-2.34 MM, PK-3.56 MM, PL-4.70 MM, PM-9.40 MM (Max. 20 Grooves.)

**Precision " V " Pulley (Fenner Type ) / Flat Pulley :** As per ISO/DIN/BSW standards in A,B,C,D,E Section with 1 to 20 Grooves up to 80" (2000 MM) dia. With TLB / Without TLB.

**Precision Gears, Sprockets & Gear Boxes:** As per ISO/DIN/BSW standards in 0.25 Module to 20 Module up to 120" (3000 MM) with 18" (450 MM) Face width.

# TIMING BELT PULLEY

## DIFFERENT PITCH CONFIGURATIONS OF TIMING BELT PULLEY

SYNCHRONOUS BELT DRIVE PULLEY: ISO 5294 – 1979 (E) BSW 4548 – 1970.  
THE Trapezoidal tooth configuration.  
MXL-2.03, XL-5.08, L-9.525, H-12.70, XH-22.225 and XXH-31.75 Pitches.

SYNCHRONOUS BELT DRIVE PULLEY : ISO 7721 – 1979.  
The Trapezoidal tooth configuration, T-5, T-10, T-20, also AT-5, AT-10, AT-20 pitch.

HIGH TORQUE BELT DRIVE PULLEY: HTD Semi – circular tooth (Curvilinear tooth) configuration 3M-HTD, 5M-HTD, 8M-HTD, 14M-HTD, 20M-HTD pitches.

SUPER TORQUE BELT DRIVE PULLEY: STS Parabolic tooth configuration.  
S-3M, S-5M, S-8M, S-14M mm pitches.

## APPLICATION

CNC Machine & General Engineering Machinery  
Saw Mills & Machinery  
Textile Mills & Machinery  
General Pumps & Compressor Industries  
Paper Machinery & Printing Machinery  
Fans & Blower Industries  
Projection Equipment & Instrumentation  
Mining Equipment & Machinery  
Medical Equipment & Pharma Machinery  
Office Equipment & Automation  
Electric Equipment & Measuring Devices  
Laundry Equipment & Machinery

## ADVANTAGES OF POSITIVE BELT DRIVE

Eliminate Slippage  
Less Bearing Load  
Less Space  
Constant Angular Velocity  
Smoother Running  
Wide Speed Range  
Wide Range of Load Capabilities  
Less Maintenance  
Less Noise  
Less Weight  
Economical



Delivering Quality Since 1997

## Timing Belt Pulley

Pitch: XL (1/5") 5.08mm

PULLEY Code no.	NO. OF TEETH	MATERIAL ALU./ST.	P.C.D	HOB.DIA. (O.D.)	MAX BORE (I.D.)
10 XL	10	ALU./ST.	16.17	15.66	6.35(1/4")
11 XL	11	"	17.19	17.28	6.35(1/4")
12 XL	12	"	19.40	18.89	9.52(3/8")
14 XL	14	"	22.64	22.16	9.52(3/8")
15 XL	15	"	24.26	23.75	12.70(1/2")
16 XL	16	"	25.87	25.36	12.70(1/2")
18 XL	18	"	29.11	28.60	12.70(1/2")
20 XL	20	"	32.34	31.83	12.70(1/2")
21 XL	21	"	33.96	33.45	19.05(7/8")
22 XL	22	"	35.57	35.06	19.05(7/8")
24 XL	24	"	38.81	38.30	19.05(7/8")
26 XL	26	"	42.04	41.53	19.05(7/8")
28 XL	28	"	45.28	44.77	19.05(7/8")
30 XL	30	"	48.51	48.00	19.05(7/8")
32 XL	32	"	51.74	51.23	19.05(7/8")
36 XL	36	"	58.21	57.70	19.05(7/8")
40 XL	40	"	64.68	64.17	19.05(7/8")
42 XL	42	"	67.91	67.40	19.05(7/8")
44 XL	44	"	71.15	70.64	19.05(7/8")
48 XL	48	"	77.62	77.11	19.05(7/8")
60 XL	60	"	97.02	96.51	19.05(7/8")
72 XL	72	"	116.63	115.92	19.05(7/8")

### STANDARD BELT WIDTH FOR "XL"

BELT WIDTH CODE NO.	INCHES	MM.
25	1/4"	6.35
31	5/16"	7.94
37	3/8"	9.52

On request, Pulley with any number of grooves between 10 grooves to 120 grooves will be supplied.

## Timing Belt Pulley



*Delivering Quality Since 1997*

PITCH: "L" (3/8") 9.525 MM

PULLEY Code no.	NO. OF TEETH	MATERIAL ALU./ST.	P.C.D	HOB.DIA. (O.D.)	MAX BORE (I.D.)
10 L	10	ALU./ST.	30.32	29.56	9.52(3/8")
12 L	12	"	36.38	35.62	9.52(3/8")
13 L	13	"	39.41	38.65	9.52(3/8")
14 L	14	"	42.45	41.69	9.52(3/8")
15 L	15	"	45.48	44.72	12.70(1/2")
16 L	16	"	48.51	47.75	12.70(1/2")
17 L	17	"	51.54	50.78	12.70(1/2")
18 L	18	"	54.57	53.81	12.70(1/2")
19 L	19	"	57.61	56.84	12.70(1/2")
20 L	20	"	60.64	59.88	12.70(1/2")
21 L	21	"	63.67	62.91	12.70(1/2")
22 L	22	"	66.70	65.94	12.70(1/2")
24 L	24	"	72.77	72.01	12.70(1/2")
26 L	26	"	78.83	78.07	12.70(1/2")
28 L	28	"	84.89	84.13	12.70(1/2")
30 L	30	"	90.96	90.20	12.70(1/2")
32 L	32	"	97.02	96.26	12.70(1/2")
36 L	36	"	109.15	108.39	12.70(1/2")
40 L	40	"	121.28	120.52	25.40(1.000")
44 L	44	"	133.40	132.64	25.40(1.000")
48 L	48	"	145.53	144.77	25.40(1.000")
60 L	60	"	181.91	181.15	25.40(1.000")
72 L	72	"	218.30	217.54	25.40(1.000")
84 L	84	"	254.68	253.92	25.40(1.000")

### STANDARD BELT WIDTH FOR "L"

BELT WIDTH CODE NO.	INCHES	MM.
50	1/2"	12.70
75	3/4"	19.05
100	1"	25.40
150	1.1/2"	38.10

On request, Pulley with any number of grooves between 10 grooves to 150 grooves will be supplied.



Delivering Quality Since 1997

## Timing Belt Pulley

Pitch: H (1/2") 12.70mm

PULLEY Code no.	NO. OF TEETH	MATERIAL ALU./ST.	P.C.D	HOB.DIA. (O.D.)	MAX BORE (I.D.)
14 H	14	ALU./ST.	56.60	55.23	9.52(3/8")
16 H	16	"	64.68	63.31	9.52(3/8")
18 H	18	"	72.77	71.40	9.52(3/8")
19 H	19	"	76.81	75.44	9.52(3/8")
20 H	20	"	80.85	79.48	12.70(1/2")
21 H	21	"	84.89	83.52	12.70(1/2")
22 H	22	"	88.94	87.57	12.70(1/2")
24 H	24	"	97.02	95.65	12.70(1/2")
26 H	26	"	105.11	103.74	19.05(7/8")
28 H	28	"	113.19	111.92	19.05(7/8")
30 H	30	"	121.28	119.91	19.05(7/8")
32 H	32	"	129.36	127.99	19.05(7/8")
36 H	36	"	145.53	144.16	19.05(7/8")
40 H	40	"	161.70	160.33	19.05(7/8")
44 H	44	"	177.87	176.50	19.05(7/8")
48 H	48	"	194.04	192.67	19.05(7/8")
60 H	60	C.I.	242.55	241.18	19.05(7/8")
72 H	72	"	291.06	289.69	19.05(7/8")
84 H	84	"	339.57	338.20	25.40 (1.000")
96 H	96	"	388.08	386.71	25.40 (1.000")
120 H	120	"	485.10	483.73	25.40 (1.000")

### STANDARD BELT WIDTH FOR "H"

BELT WIDTH CODE NO.	INCHES	MM.
75	3/4"	19.05
100	1"	25.40
150	1.1/8"	38.10
200	2"	50.80
300	3"	76.20

On request, Pulley with any number of grooves between 14 grooves to 156 grooves will be supplied.

## Timing Belt Pulley



*Delivering Quality Since 1997*

PITCH: "XH" (7/8") 22.225 MM

PULLEY Code no.	NO. OF TEETH	MATERIAL ALU./ST.	P.C.D	HOB.DIA. (O.D.)	MAX BORE (I.D.)
18 XH	18	S.T.	127.34	124.55	25.40(1.000")
20 XH	20	S.T.	141.49	138.70	25.40(1.000")
22 XH	22	S.T.	155.64	152.85	25.40(1.000")
24 XH	24	S.T.	169.79	167.00	25.40(1.000")
26 XH	26	S.T.	183.94	181.14	25.40(1.000")
28 XH	28	S.T.	198.08	195.29	25.40(1.000")
30 XH	30	S.T.	212.23	209.44	25.40(1.000")
32 XH	32	C.I.	226.38	223.59	25.40(1.000")
40 XH	40	C.I.	282.98	280.19	25.40(1.000")
48 XH	48	C.I.	339.57	336.78	25.40(1.000")
60 XH	60	C.I.	424.47	421.68	25.40(1.000")
72 XH	72	C.I.	509.36	506.57	25.40(1.000")
84 XH	84	C.I.	594.25	591.46	25.40(1.000")
96 XH	96	C.I.	679.15	676.35	25.40(1.000")
120 XH	120	C.I.	848.93	846.14	25.40(1.000")

### STANDARD BELT WIDTH FOR "XH"

BELT WIDTH CODE NO.	INCHES	MM.
150	1.1/5"	38.10
200	2"	50.80
300	3"	76.20
400	4"	101.60

On request, Pulley with any number of grooves between 18 grooves to 156 grooves will be supplied.



Delivering Quality Since 1997

## Timing Belt Pulley

Pitch: XXH (1.1/4") 31.75mm

PULLEY Code no.	NO. OF TEETH	MATERIAL ALU./ST.	P.C.D	HOB.DIA. (O.D.)	MAX BORE (I.D.)
18 XXH	18	ST. /CI.	181.91	178.86	25.40(1.000")
19 XXH	19	"	192.02	188.97	25.40(1.000")
20 XXH	20	"	202.13	199.08	25.40(1.000")
21 XXH	21	"	212.23	209.18	25.40(1.000")
22 XXH	22	"	222.34	219.29	25.40(1.000")
24 XXH	24	"	242.55	239.50	25.40(1.000")
25 XXH	25	"	252.66	249.61	25.40(1.000")
26 XXH	26	CI.	262.76	259.71	25.40(1.000")
27 XXH	27	"	272.87	269.82	25.40(1.000")
30 XXH	30	"	303.19	300.14	25.40(1.000")
34 XXH	34	"	343.62	340.57	25.40(1.000")
40 XXH	40	"	404.25	401.20	25.40(1.000")
48 XXH	48	"	485.10	482.05	25.40(1.000")
60 XXH	60	"	606.38	603.33	25.40(1.000")
72 XXH	72	"	727.66	724.61	25.40(1.000")
90 XXH	90	"	909.57	906.52	25.40(1.000")

### STANDARD BELT WIDTH FOR "XXH"

BELT WIDTH CODE NO.	INCHES	MM.
200	2"	50.80
300	3"	76.20
400	4"	101.60
500	5"	127.00

On request, Pulley with any number of grooves between 14 grooves to 156 grooves will be supplied.



## Timing Belt Pulley



*Delivering Quality Since 1997*

PITCH: "T 2.5" 2.50 MM

PULLEY Code no.	NO. OF TEETH	MATERIAL ALU./ST.	P.C.D	HOB.DIA. (O.D.)	MAX BORE (I.D.)
10 T 2.5	10	ALU./ST.	8.05	7.45	--
12 T 2.5	12	"	9.55	9.00	--
13 T 2.5	13	"	10.40	9.80	--
14 T 2.5	14	"	11.14	10.60	--
15 T 2.5	15	"	11.94	11.40	--
16 T 2.5	16	"	12.73	12.20	--
18 T 2.5	18	"	14.32	13.80	4.00
19 T 2.5	19	"	15.12	14.60	4.00
20 T 2.5	20	"	15.92	15.40	4.00
22 T 2.5	22	"	17.51	17.00	4.00
24 T 2.5	24	"	19.10	18.55	4.00
25 T 2.5	25	"	19.89	19.35	4.00
26 T 2.5	26	"	20.69	20.15	4.00
28 T 2.5	28	"	22.28	21.75	4.00
30 T 2.5	30	"	23.87	23.35	6.00
32 T 2.5	32	"	25.46	24.95	6.00
36 T 2.5	36	"	28.65	28.10	6.00
40 T 2.5	40	"	31.83	31.30	6.00
44 T 2.5	44	"	35.01	34.50	6.00
48 T 2.5	48	"	38.20	37.70	6.00
60 T 2.5	60	"	47.75	47.25	6.00
72 T 2.5	72	"	57.40	56.80	6.00

### STANDARD BELT WIDTH FOR "T 50"

BELT WIDTH CODE NO.	MM.
4	6.35
6	7.94
8	9.52

On request, Pulley with any number of grooves between 10 grooves to 150 grooves will be supplied.



Delivering Quality Since 1997

## Timing Belt Pulley

Pitch: "T-5" 5mm

PULLEY Code no.	NO. OF TEETH	MATERIAL ALU./ST.	P.C.D	HOB.DIA. (O.D.)	MAX BORE (I.D.)
10 T 5	10	ALU./ST.	15.92	15.02	--
12 T 5	12	"	19.10	18.25	--
13 T 5	13	"	20.85	19.85	--
14 T 5	14	"	22.28	21.45	--
15 T 5	15	"	23.87	23.05	--
16 T 5	16	"	25.46	24.60	--
18 T 5	18	"	28.65	27.80	4.00
19 T 5	19	"	30.24	29.40	4.00
20 T 5	20	"	31.83	31.00	4.00
22 T 5	22	"	35.01	34.25	4.00
24 T 5	24	"	38.20	37.40	4.00
25 T 5	25	"	39.79	39.00	4.00
26 T 5	26	"	41.38	40.60	4.00
27 T 5	27	"	42.97	42.20	4.00
28 T 5	28	"	44.56	43.75	4.00
30 T 5	30	"	47.75	46.95	4.00
32 T 5	32	"	50.93	50.10	6.00
36 T 5	36	"	57.30	56.45	6.00
40 T 5	40	"	63.66	62.85	6.00
42 T 5	42	"	66.84	66.00	6.00
44 T 5	44	"	70.03	69.20	6.00
48 T 5	48	"	76.39	75.55	12.70
60 T 5	60	"	95.49	94.65	12.70

### STANDARD BELT WIDTH FOR "T 5"

BELT WIDTH CODE NO.	MM.
8	9.52
10	10.00
12	12.00
16	16.00
25	25.00

On request, Pulley with any number of grooves between 10 grooves to 150 grooves will be supplied.

## Timing Belt Pulley



*Delivering Quality Since 1997*

PITCH: "T 10" 10 MM

PULLEY Code no.	NO. OF TEETH	MATERIAL ALU./ST.	P.C.D	HOB.DIA. (O.D.)	MAX BORE (I.D.)
18 T 10	18	ALU./ST.	57.45	55.45	12.70(1/2")
19 T 10	19	"	60.65	58.65	12.70(1/2")
20 T 10	20	"	63.81	61.80	12.70(1/2")
22 T 10	22	"	70.20	68.20	12.70(1/2")
24 T 10	24	"	76.55	74.55	12.70(1/2")
25 T 10	25	"	79.75	77.75	12.70(1/2")
26 T 10	26	"	82.90	80.90	12.70(1/2")
27 T 10	27	"	86.10	84.10	12.70(1/2")
28 T 10	28	"	89.25	87.25	12.70(1/2")
30 T 10	30	"	95.65	93.65	12.70(1/2")
32 T 10	32	"	102.00	100.00	12.70(1/2")
36 T 10	36	"	114.75	112.75	12.70(1/2")
40 T 10	40	"	127.45	125.45	12.70(1/2")
44 T 10	44	"	140.20	138.20	12.70(1/2")
48 T 10	48	"	152.95	150.95	12.70(1/2")
60 T 10	60	"	191.15	189.15	12.70(1/2")

### STANDARD BELT WIDTH FOR "T 10"

BELT WIDTH CODE NO.	MM.
12	12.00
16	16.00
25	25.00
32	32.00
50	50.00

On request, Pulley with any number of grooves between 14 grooves to 156 grooves will be supplied.



Delivering Quality Since 1997

## Timing Belt Pulley

Pitch: "T-20" 20mm

PULLEY Code no.	NO. OF TEETH	MATERIAL ST. /C.I.	P.C.D	HOB.DIA. (O.D.)	MAX BORE (I.D.)
18 T 20	18	ST.	114.59	111.75	12.70 (1/2")
20 T 20	20	"	127.32	124.50	12.70 (1/2")
22 T 20	22	"	140.06	137.20	12.70 (1/2")
24 T 20	24	"	152.79	149.95	12.70 (1/2")
25 T 20	25	ST. /C.I	159.15	156.30	12.70 (1/2")
30 T 20	30	"	190.99	188.15	12.70 (1/2")
32 T 20	32	"	203.72	200.85	25.40 (1.000")
36 T 20	36	"	229.18	226.35	25.40 (1.000")
40 T 20	40	C.I	254.65	251.80	25.40 (1.000")
48 T 20	48	"	305.58	302.70	25.40 (1.000")
60 T 20	60	"	381.97	379.10	25.40 (1.000")
72 T 20	72	"	458.37	455.50	25.40 (1.000")

### STANDARD BELT WIDTH FOR "T 20"

BELT WIDTH CODE NO.	MM.
30	32.00
50	50.00
75	75.00
100	100.00

On request, Pulley with any number of grooves between 18 grooves to 156 grooves will be supplied.

## Timing Belt Pulley



*Delivering Quality Since 1997*

PITCH: "3M HTD" 3.00 MM

PULLEY Code no.	NO. OF TEETH	MATERIAL ALU./ST.	P.C.D	HOB.DIA. (O.D.)	MAX BORE (I.D.)
10 3M HTD	10	ALU./ST.	9.55	8.79	----
12 3M HTD	12	"	11.46	10.70	----
13 3M HTD	13	"	12.41	11.65	----
14 3M HTD	14	"	13.37	12.61	----
15 3M HTD	15	"	14.32	13.56	----
16 3M HTD	16	"	15.28	14.52	----
18 3M HTD	18	"	17.19	16.43	4.00
20 3M HTD	20	"	19.10	18.34	4.00
21 3M HTD	21	"	20.05	19.29	4.00
22 3M HTD	22	"	21.01	20.25	4.00
24 3M HTD	24	"	22.92	22.16	4.00
26 3M HTD	26	"	24.83	24.07	4.00
28 3M HTD	28	"	26.74	25.98	6.00
30 3M HTD	30	"	28.65	27.89	6.00
32 3M HTD	32	"	30.56	29.80	6.00
36 3M HTD	36	"	34.38	33.62	6.00
40 3M HTD	40	"	38.20	37.44	6.00
42 3M HTD	42	"	40.11	39.35	6.00
44 3M HTD	44	"	42.02	41.26	6.00
48 3M HTD	48	"	45.84	45.08	8.00
60 3M HTD	60	"	57.30	56.54	8.00
72 3M HTD	72	"	68.75	67.99	8.00

### STANDARD BELT WIDTH FOR "3M HTD"

BELT WIDTH CODE NO.	MM.
6	6.00
9	9.00
15	15.00

On request, Pulley with any number of grooves between 10 grooves to 120 grooves will be supplied.



Delivering Quality Since 1997

## Timing Belt Pulley

Pitch: "5M HTD" 5mm

PULLEY Code no.	NO. OF TEETH	MATERIAL ALU./ST.	P.C.D	HOB.DIA. (O.D.)	MAX BORE (I.D.)
12 5M HTD	12	ALU./ST.	19.10	17.96	4.00
13 5M HTD	13	"	20.69	19.55	4.00
14 5M HTD	14	"	22.28	21.14	4.00
15 5M HTD	15	"	23.87	22.73	4.00
16 5M HTD	16	"	25.46	24.32	4.00
18 5M HTD	18	"	28.65	27.51	4.00
20 5M HTD	20	"	31.83	30.69	4.00
21 5M HTD	21	"	33.42	32.28	4.00
22 5M HTD	22	"	35.01	33.87	6.00
24 5M HTD	24	"	38.20	37.06	6.00
26 5M HTD	26	"	41.38	40.24	6.00
28 5M HTD	28	"	44.56	43.42	6.00
30 5M HTD	30	"	47.75	46.61	6.00
32 5M HTD	32	"	50.93	49.79	6.00
36 5M HTD	36	"	57.30	56.16	8.00
40 5M HTD	40	"	63.66	62.52	8.00
42 5M HTD	42	"	66.84	65.70	8.00
44 5M HTD	44	"	70.03	68.89	8.00
48 5M HTD	48	"	76.39	75.25	10.00
60 5M HTD	60	"	95.49	94.35	10.00
72 5M HTD	72	"	114.59	113.45	10.00

### STANDARD BELT WIDTH FOR "5M HTD"

BELT WIDTH CODE NO.	MM.
9	9.00
15	15.00
20	20.00
25	25.00

On request, Pulley with any number of grooves between 12 grooves to 150 grooves will be supplied.

## Timing Belt Pulley



*Delivering Quality Since 1997*

PITCH: "8M HTD" 8.00 MM

PULLEY Code no.	NO. OF TEETH	MATERIAL ST. /CI.	P.C.D	HOB.DIA. (O.D.)	MAX BORE (I.D.)
18 8M HTD	18	ST. /CI.	45.84	44.46	8.00
20 8M HTD	20	"	50.93	49.56	8.00
22 8M HTD	22	"	56.02	54.65	8.00
24 8M HTD	24	"	61.12	59.74	8.00
26 8M HTD	26	"	66.21	64.84	8.00
28 8M HTD	28	"	71.30	69.93	10.00
30 8M HTD	30	"	76.39	75.02	10.00
32 8M HTD	32	"	81.49	80.12	10.00
34 8M HTD	34	"	86.58	85.21	10.00
36 8M HTD	36	"	91.67	90.30	10.00
38 8M HTD	38	"	96.77	95.39	10.00
40 8M HTD	40	"	101.86	100.49	12.00
42 8M HTD	42	"	106.95	105.58	12.00
44 8M HTD	44	"	112.05	110.67	12.00
48 8M HTD	48	"	122.23	120.86	12.00
56 8M HTD	56	"	142.60	141.23	12.00
60 8M HTD	60	"	152.79	151.42	12.00
64 8M HTD	64	"	162.97	161.60	18.00
72 8M HTD	72	"	183.35	181.97	18.00
80 8M HTD	80	"	203.72	202.35	18.00
84 8M HTD	84	"	213.90	212.53	18.00
90 8M HTD	90	"	229.18	227.81	18.00
112 8M HTD	112	CI.	285.21	283.83	20.00
144 8M HTD	144	"	366.69	365.32	20.00
168 8M HTD	168	"	427.81	426.44	20.00
192 8M HTD	192	"	488.92	487.55	20.00

### STANDARD BELT WIDTH FOR "8M HTD"

BELT WIDTH CODE NO.	MM.
20	20.00
30	30.00
50	50.00
85	85.00

On request, Pulley with any number of grooves between 18 grooves to 192 grooves will be supplied.



Delivering Quality Since 1997

## Timing Belt Pulley

Pitch: "14M HTD" 14mm

PULLEY Code no.	NO. OF TEETH	MATERIAL ST. /CI.	P.C.D	HOB.DIA. (O.D.)	MAX BORE (I.D.)
28 14M HTD	28	ST. /CI.	124.78	122.12	12.00
29 14M HTD	29	"	129.23	126.57	12.00
30 14M HTD	30	"	133.69	130.99	12.00
32 14M HTD	32	"	142.60	139.88	12.00
34 14M HTD	34	"	151.51	148.79	15.00
36 14M HTD	36	"	160.43	157.68	15.00
38 14M HTD	38	"	169.34	166.60	15.00
40 14M HTD	40	"	178.25	175.49	15.00
44 14M HTD	44	"	196.08	193.28	20.00
48 14M HTD	48	"	213.90	211.11	20.00
56 14M HTD	56	"	249.56	246.76	20.00
60 14M HTD	60	"	267.38	264.59	20.00
64 14M HTD	64	CI.	285.21	282.41	20.00
72 14M HTD	72	"	320.86	318.06	20.00
80 14M HTD	80	"	356.51	353.71	25.00
84 14M HTD	84	"	374.33	371.54	25.00
90 14M HTD	90	"	401.07	398.28	25.00
112 14M HTD	112	"	499.11	496.32	25.00
144 14M HTD	144	"	641.71	638.92	40.00
168 14M HTD	168	"	748.66	745.87	40.00
192 14M HTD	192	"	855.62	852.82	40.00
216 14M HTD	216	"	962.57	959.76	40.00

### STANDARD BELT WIDTH FOR "14M HTD"

BELT WIDTH CODE NO.	MM.
40	40.00
55	55.00
85	85.00
115	115.00
170	170.00

On request, Pulley with any number of grooves between 22 grooves to 216 grooves will be supplied.



## Timing Belt Pulley



*Delivering Quality Since 1997*

PITCH: "20M HTD" 20.00 MM

PULLEY Code no.	NO. OF TEETH	MATERIAL ST. /CI.	P.C.D	HOB.DIA. (O.D.)	MAX BORE (I.D.)
34 20M HTD	34	ST. /CI.	216.45	212.13	25.00
36 20M HTD	36	"	229.18	224.87	25.00
38 20M HTD	38	"	241.92	237.60	25.00
40 20M HTD	40	"	254.65	250.33	25.00
44 20M HTD	44	CI.	280.11	275.79	25.00
48 20M HTD	48	"	305.58	301.26	25.00
60 20M HTD	60	"	381.97	377.65	30.00
64 20M HTD	64	"	407.44	403.12	30.00
72 20M HTD	72	"	458.37	454.05	30.00
80 20M HTD	80	"	509.30	504.98	40.00
90 20M HTD	90	"	572.96	568.64	40.00
112 20M HTD	112	"	713.01	708.70	40.00
144 20M HTD	144	"	916.73	912.41	40.00
168 20M HTD	168	"	1069.52	1065.21	50.00
192 20M HTD	192	"	1222.31	1218.00	50.00
216 20M HTD	216	"	1375.1	1370.78	50.00

### STANDARD BELT WIDTH FOR "20M HTD"

BELT WIDTH CODE NO.	MM.
115	115.00
170	170.00
230	230.00
340	340.00

On request, Pulley with any number of grooves between 22 grooves to 216 grooves will be supplied.



*Delivering Quality Since 1997*



## **Muratech Engineering Company**

**MANUFACTURER OF MECHANICAL POWER  
TRANSMISSION PRODUCTS**

Address : Plot No. S5 & S6, Siddhivinayak industrial estate,  
Near odhav police station, Odhav G.I.D.C., odhav,  
Ahmedabad-382415, Gujarat, India.

Web : [www.muracopower.co.in](http://www.muracopower.co.in)

Email : [muracopower@hotmail.com](mailto:muracopower@hotmail.com) / [info@muracopower.co.in](mailto:info@muracopower.co.in)

Phone : +91 95868 23032 / +91 98253 48476 / +91 99745 83383